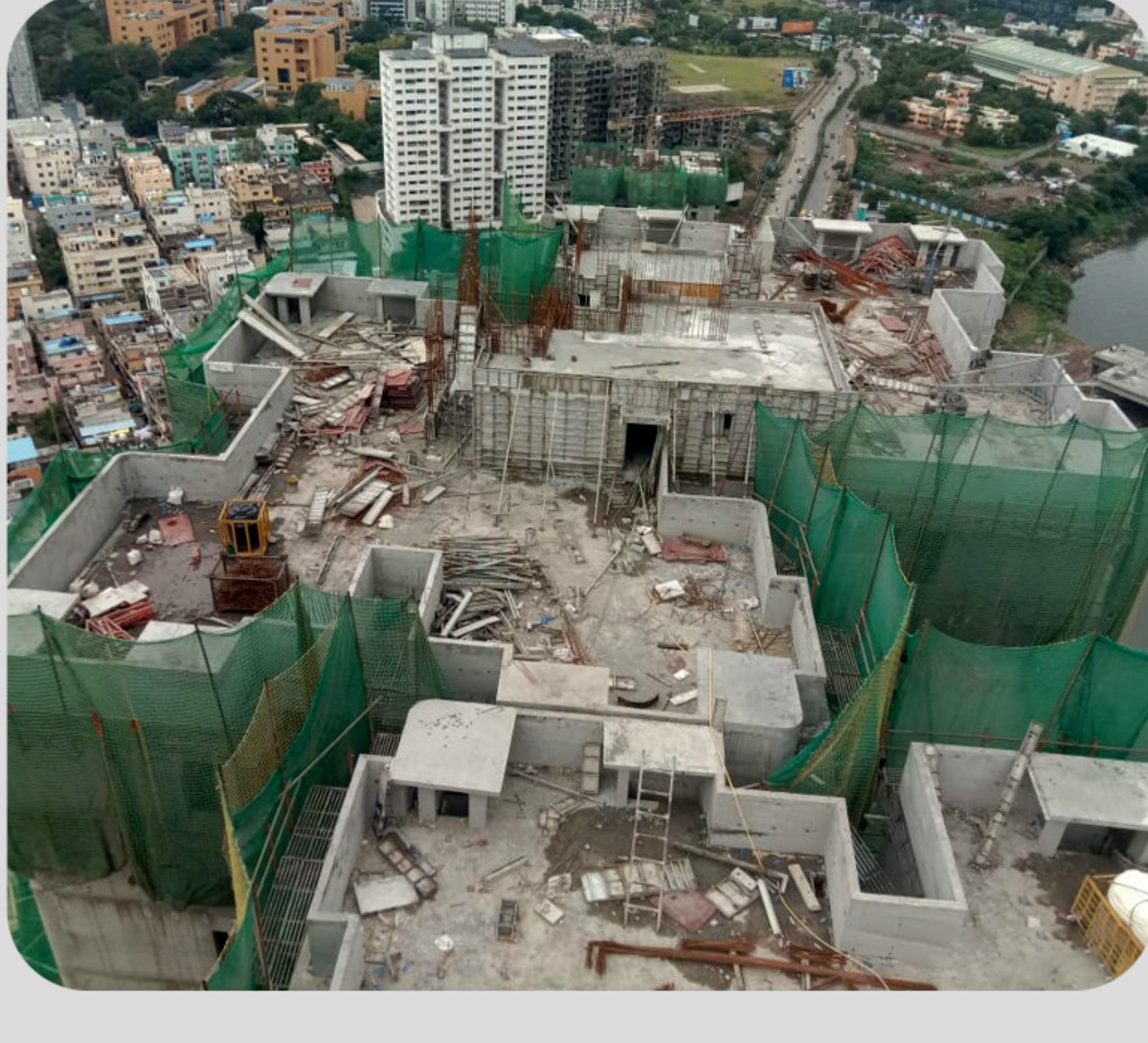




Riverdale Grove

Steady. Strong. Rising.



Construction Update: July 2025

DISCLAIMER: THIS NEWSLETTER PROVIDES THE 'CONSTRUCTION UPDATE' BASED ON THE ACTUAL 'WORK IN PROGRESS' COMPLETED FOR THIS MONTH.

THE NEWSLETTER IS ALSO UPLOADED ON THE RESPECTIVE PROJECT PAGE OF [DUVILLE.COM](https://duville.com)

Dear Homeowner,

We are pleased to present the latest progress update from **Riverdale Grove**. Across all towers, construction momentum remains strong as we continue to meet milestones with precision and care.

We have some exciting developments in the pipeline for our esteemed customers which we shall be unveiling soon. In the meanwhile, in order to make the referral process rewarding for each and every one of our customers, we are requesting you to share your references with us at marketing@duville.com



Take a first look at one of the completed apartments at **The Grove**.



B6

Residential Tower

Above terrace Parapet RCC work completed; LMR and OHT RCC WIP.



- Blockwork up to 30th slab completed; 31st slab commenced.
- 28th slab gypsum plaster completed; 29th slab commenced.
- 24th slab tiling work completed; 25th slab commenced.
- Firefighting work up to 26th slab completed; 27th slab commenced.
- Sliding doors & windows installed on 20th slab; installation work ongoing from 21st to 23rd slab.
- North side external texture work in progress.

Residential Tower

Blockwork up to 29th slab completed; 30th slab commenced.

B7

- 25th slab gypsum plaster completed; 26th slab commenced.
- Waterproofing up to 25th slab completed; work commenced on the 26th slab.
- Plumbing up to 25th slab completed; 26th slab commenced.
- Sliding doors & windows installed on 20th slab; installation ongoing from 21st to 23rd slab.



B8

Residential Tower

Blockwork up to 28th slab completed; 29th slab commenced.



- 25th slab gypsum plaster completed; 26th slab commenced.
- Plumbing up to 25th slab completed; 26th slab commenced.
- Waterproofing up to 25th slab completed; 26th slab commenced.
- 24th slab tiling completed; 25th slab commenced.
- Sliding doors & windows installed on 20th slab; installation ongoing on 21st to 23rd slab.

A Grove Grows Better Together.

Refer friends & family to earn:

₹1L

for any **successful referral**, no matter the flat size.

How to Refer:

Email us at marketing@duville.com or

WhatsApp us on +91 99229 92628

Provide the below details:

- 1) Your name
- 2) Your apartment & tower
- 3) Your contact details
- 4) Referee's name & contact info
- 5) What they're interested in

Once your referee completes their booking, we'll reach out with the referral credit details.

BECAUSE EVERY GROVE DESERVES GREAT NEIGHBOURS.

Thank you for being a valued member of the **Riverdale Grove community**. We are committed to delivering quality, transparency, and timely updates as we build your future home.

Warm regards,
The Riverdale Grove Team



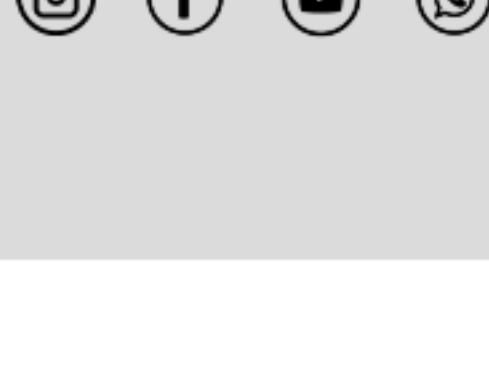
<https://maharera.maharashtra.gov.in/project/view/29414>

Maha RERA Registration
No. - P52100029023

+91 9922992628

info@duville.com

www.duville.com



Riverdale Grove, Plot Bearing / CTS / Survey / Final Plot No.: S No 16/2A, 17/1, 17/3, 17/4 and 17/5 at KHARADI, Havelli, Pune, 411014